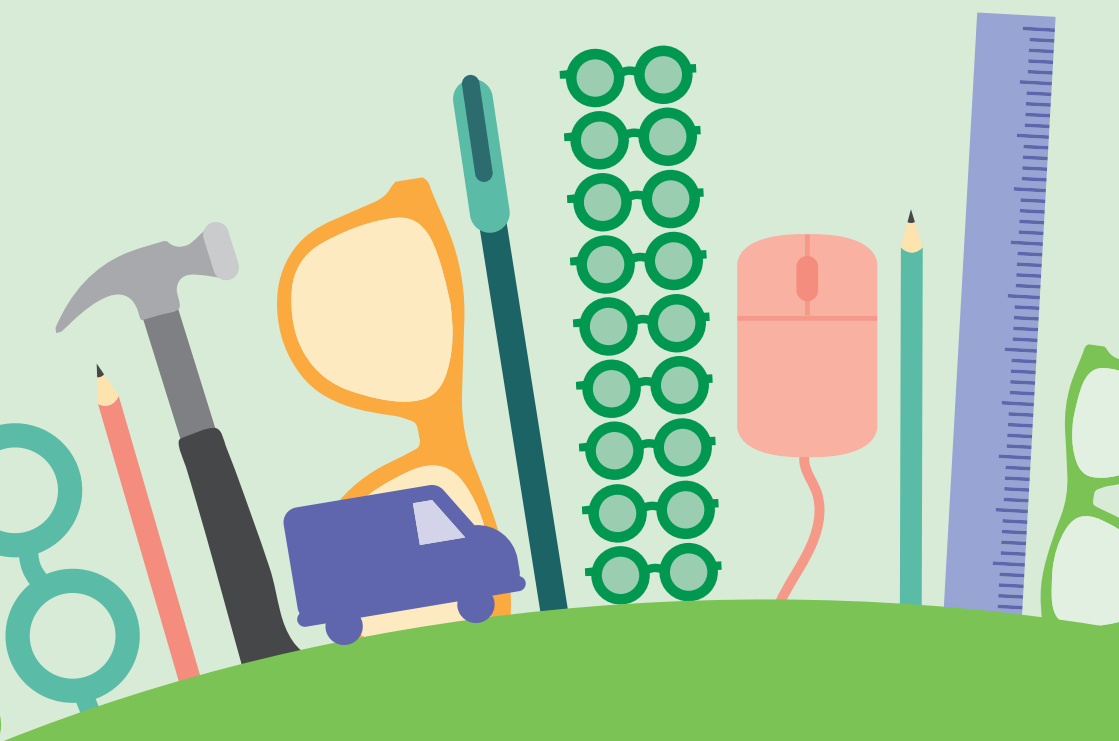


Easy
eyecare
**for your
workplace**



Specsavers

Protect your employees' eyesight the easy way – with Specsavers Corporate Eyecare. Our voucher scheme is simple to understand, virtually administration-free, and excellent value for money.

Specsavers is a family-run business, with over 1,000 stores across the UK, managing manufacturing through to dispensing. We have millions of customers, but you can be reassured your employees will always receive personal one-to-one service and care.

Importance of **eye health**

An eye test is actually quite similar to having a check-up at the dentist, although a lot of people don't see it that way. Eye tests are important for indicating whether a person needs glasses, or needs to change their prescription, but that's not all. A full eye test can detect more serious health issues, such as high blood pressure, diabetes or glaucoma.

We recommend that everyone has an eye test at least every two years. Whether your employees are in front of a computer monitor, in an industrial environment or behind a steering wheel, we have a voucher that will allow you to safeguard their eyesight properly.

Employees also have the opportunity to pay for an Optical Coherence Tomography (OCT) scan if they wish. An OCT scan creates a detailed 3D image of the eye that could help us detect treatable eye conditions up to four years earlier than traditional methods. There's more information about OCT scans at [specsavers.co.uk/eye-test/oct-scan](https://www.specsavers.co.uk/eye-test/oct-scan).

Voucher types

We understand your employees' health is important so we have designed four corporate eyecare offers that you and they will appreciate:

- Visual Display Unit (VDU) Eyecare vouchers (to cover DSE requirements)
- Safety Eyewear vouchers
- Optical Care vouchers
- Premium Club vouchers

The vouchers cover all aspects of eyecare for employees and are designed with you in mind.

The voucher system

Our voucher system allows you to control who within your business has access to order and to issue vouchers. All vouchers can be personalised to the individual they are being issued to, should you wish to record this. You can add the employee's name, employee number and cost centre for your own internal tracking purposes. Vouchers can be issued via email, straight to your employees, or you can print the voucher and distribute in the traditional way.

The voucher system allows daily reporting. You can see which employees have used their voucher, which are still to use them, and the outcome, for example, who has a Visual Display Unit (VDU) requirement*. You can also track the optometrists' recommended retest dates.

*The Health and Safety (Display Screen Equipment) Regulations 1992

As easy as 1,2,3

For you

1. Decide which vouchers your business requires
2. Place your order online
3. On receipt of payment, vouchers are available online to distribute to employees

For your employee:

1. Receive voucher from employer
2. Book appointment online or by phone
3. Present voucher prior to the eye test

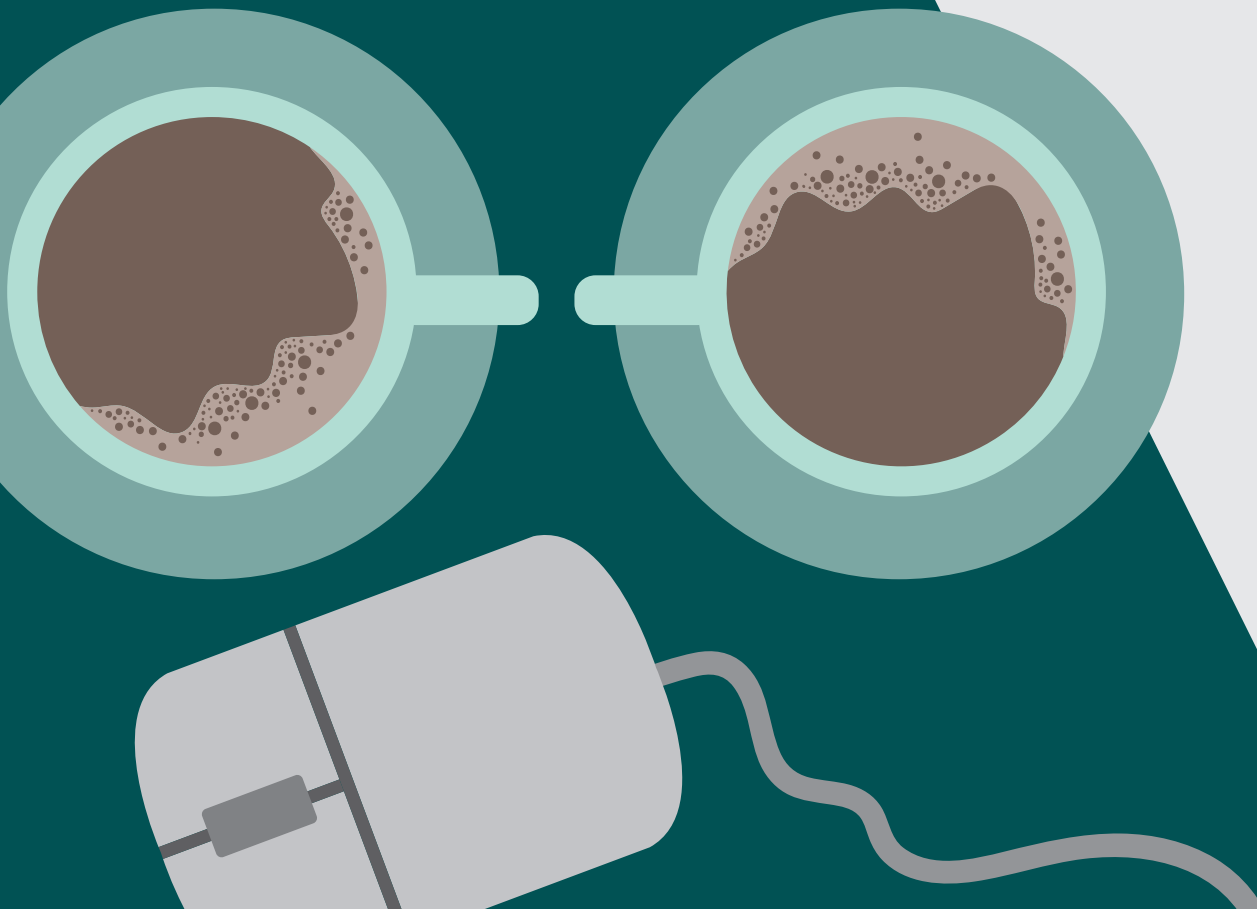
We'll take care of all the administration from then onwards and there's no admin charge. It really is a simple, controllable and cost-effective scheme.

Any unused vouchers can be returned for a full refund or replacement, provided you contact us up to 60 days after the expiry date.

Our dedicated customer service team is on hand to answer any questions you may have. They can be contacted via email at uk.corporateeyecare@specsavers.com or by calling 0115 933 0800.

VDU/DSE Eyecare voucher

£19 per voucher
(to cover DSE requirements*)



Benefit

- Full eye test
- £20 off when purchasing from the £100 range with Premium Club
- One pair of glasses from the £50 range or £50 towards glasses, when required solely and specifically for VDU use

Who's it for?

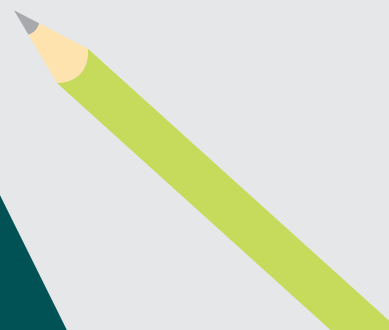
If your employees work for long periods in front of monitors, computer screens and other VDU, it can cause eyestrain. As an employer, you are legally* required to provide and fund an eye examination for any employees using VDU. If glasses are required solely and specifically for VDU, you are also obliged to pay for basic frames and lenses.

*The Health and Safety (Display Screen Equipment) Regulations 1992.

The voucher

Each voucher provides a full eye examination. Should it be identified that your employee's prescription is required solely and specifically for VDU use, the employee will be able to select a pair of glasses from the £50 range, fitted with CR39 single-vision lenses plus scratch-resistant treatment, as standard. Alternatively, the £50 contribution can be used towards an upgrade to other frame ranges. Premium Club offers a further £20 contribution when glasses are selected from the £100 range or above.

Terms and conditions apply. See back of brochure for details.





Safety Eyewear voucher

£40 per voucher

Benefit

A range of safety eyewear to meet the needs of your employees. Specsavers and Stryder Eyewear have created an enhanced range of safety eyewear covering a wider range of industries and PPE requirements.

Who's it for?

If your employees work in any environment that can pose any risk of damaging their eyes, wearing safety eyewear is a must. Our safety eyewear follows rigorous production methods to ensure product integrity and meets all the required safety regulations. The scratch-resistant safety lenses could help prevent a serious accident, and, as they're prescription lenses, they can be worn in place of the employee's own glasses. All our safety glasses conform to EN166 S and EN166 F* specifications and are all British Standards kitemarked.

*EN166 F with addition of our polycarbonate lens option.

The voucher

Safety Eyewear voucher - £40


This voucher entitles the holder to one complete pair of Specsavers' safety glasses from our 'classic' range, fitted with CR39 single-vision lenses plus scratch-resistant treatment, as standard. A second safety voucher used in conjunction with another safety voucher will cover standard bifocal or varifocal lenses. Upgrades to more expensive ranges and lens options at customer's expense.

Safety Eyewear Lens Options voucher - from £15

For use in conjunction with the safety voucher detailed above.

Clip on UV tints	£15
Tint	£15
Polycarbonate	£15
Toughened glass	£15
UV treatment	£15
Reactions	£30
UltraClear SuperClean	£30
Toughened glass lenses with anti-reflection treatment	£30

Terms and conditions apply. See back of brochure for details.



Optical Care voucher

£40 per voucher



Benefit

- Full eye test
- One pair of glasses from the £50 range or £50 towards glasses
- £20 off when purchasing from the £100 range with Premium Club
- If no prescription is required, a pair of non-prescription sunglasses

Who's it for?

Any employee in your workplace, including offices and warehouses, or anyone who drives a company vehicle. Optical Care vouchers entitle everyone to a full eye test and a contribution towards glasses, not just those required to have them under current legislation.

The voucher

Each £40 voucher provides a full eye test at any Specsavers store. If glasses are required, the employee will be able to select a pair of glasses from the £50 range, fitted with CR39 single-vision lenses plus scratch-resistant treatment, as standard.

Alternatively, your employees can use the £50 contribution towards a pair of glasses from a higher price range or have bifocal or varifocal lenses and simply pay the difference themselves. If the eye examination indicates that your employee does not need corrective glasses, they can choose a pair of non-prescription sunglasses from a selected range.

In addition, Premium Club offers a further £20 contribution when glasses are selected from the £100 range or above, giving a combined contribution of £70.

Terms and conditions apply. See back of brochure for details.

Premium Club vouchers

Free

Benefit

- £20 off glasses from £100 range or above

If you order any combination of our vouchers, you can request our Premium Club vouchers free of charge.

This voucher entitles the holder to a £20 discount off glasses from our £100 range or above. Also, employees can request two further Premium Club vouchers annually, to be used by members of their family. All they have to do is present their voucher at any one of our UK stores and they are eligible for the same great discount.

Just tell us how many Premium Club vouchers you would like to receive when you place your voucher order – don't worry if you run out as you can simply request more.

Terms and Conditions apply. See back of brochure for details.



Terms and conditions

Applies to all vouchers: The minimum order is five vouchers from any combination of our products (excluding Premium Club). Can be redeemed at any Specsavers store in the UK and the Channel Islands. All vouchers are non-transferable and cannot be exchanged for cash. Specsavers must be notified of your wish to exchange or refund expired vouchers no later than 60 days after the expiry date to qualify for a reimbursement of full purchase cost. Vouchers returned after this date cannot be accepted and will not be reimbursed. Vouchers cannot be used towards the cost of reglazes. Cannot be used online. Vouchers can only be redeemed by the named recipient. This voucher cannot be used by persons under 16 years old. Voucher can be used with all other Specsavers offers except the over-60s discount, students discount, and any contact lenses which are excluded. All terms for in-store offers apply.

VDU Eyecare vouchers: Upgrades to more expensive ranges and lens options at customer's expense. Vouchers are non-transferable and cannot be exchanged for cash. One voucher per transaction. Glasses must be chosen on the same day as your eye test.

Safety Eyewear vouchers: Specsavers Safety Eyewear vouchers can be redeemed at any Specsavers store in the UK from the classic range. Upgrades to more expensive ranges and lens options at customer's expense. Lenses supplied are CR39 unless otherwise requested. An additional safety eyewear voucher is required for multifocal safety glasses. Other lens options are available if appropriate number and type of lens option vouchers are presented at time of redemption. Can be used only against a purchase of Specsavers safety glasses. Cannot be used in conjunction with 2 for 1 or other in-store offers. Cannot be exchanged in whole or in part for cash.

Optical Care vouchers: Upgrades to more expensive ranges and lens options at employee's expense. Plano (non-prescription) sunglasses from a selected range. Cannot be exchanged in part or in whole for cash. Only one voucher per transaction. Glasses must be chosen on the same day as your eye test.

Premium Club vouchers: Please note that Premium Club vouchers are provided free, and therefore Specsavers reserves the right to supply fewer Premium Club vouchers than requested, or not to supply Premium Club vouchers at all, at our discretion. Cannot be exchanged in whole or in part for cash or used with over-60s discount or student offers. Only one Premium Club voucher per transaction.

Specsavers Corporate Eyecare vouchers and VAT: The sale of Specsavers Corporate Eyecare vouchers is outside the scope of VAT. This means that VAT is not charged on the voucher invoice that you receive. We are required by law to charge VAT on the product element of the prescription eyewear at the point of sale when the voucher is exchanged for eyewear. VAT is not charged on the eye examination or the dispensing services included in the complete price of the eyewear. The VAT analysis is printed on the till receipt normally provided to our customers at the point of sale. If you wish to reclaim the VAT, an additional VAT invoice must be requested at the point of sale.

**Buy vouchers online at
[specsavers.co.uk/corporate](https://www.specsavers.co.uk/corporate)**

Contact us to find out more

Tel 0115 933 0800

Email uk.corporateeyecare@specsavers.com

Website [specsavers.co.uk/corporate](https://www.specsavers.co.uk/corporate)

